



DEPARTMENT OF Grants & Charitable Contributions

AT JANSSEN BIOTECH, INC.

Our primary focus is making life-changing, long-term differences in human health and disease management for those who may be helped by the products and services we provide.

The purpose of our disclosure of supported educational grants and charitable contributions is to demonstrate our ongoing commitment to this endeavor.

It is our hope that this disclosure will help the general public to better understand the nature and volume of programs that we support in the interest of advancing patient care and supporting local communities.



EDUCATIONAL GRANTS

Educational grants and fellowships are provided for specific educational purposes that benefit patients and healthcare professionals.

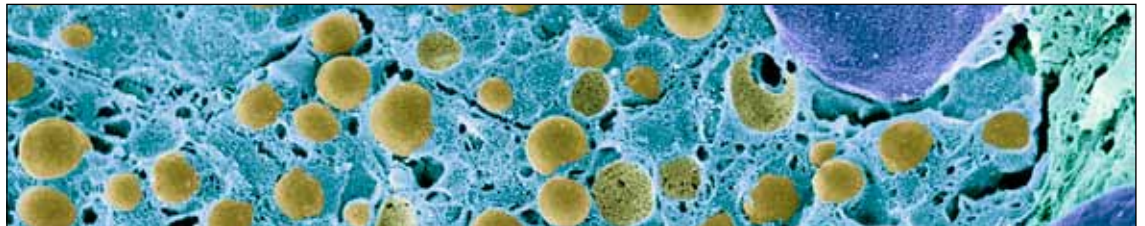
Areas of Interest Eligible for Funding:

- Dermatology
- Gastroenterology
- Oncology
- Rheumatology

Check website for changes to Therapeutic Areas of Interest

Types of Grants Eligible for Funding:

- Accredited Continuing Education Activities
- Non-Accredited Educational Activities for healthcare providers and Allied Health Professionals
- Patient Education materials and/or programs
- Fellowships



The funding process — what to expect

All grant applications receive careful consideration and review:

1 Registration

- Visit pharmaedgrants.com. Click on Janssen Biotech, Inc. or the hyperlink embedded in “To access the electronic grant application system.”
- Click the “Register” button to begin filling out your organization’s information for grant submission
- Please note that both requestors and authorized signers must register

2 Submission process

Upon the completion of registration, an organization may begin the grant submission process:

- Requests must be completed at least six weeks prior to the program start date
- Completed application forms include (but are not limited to): plan for use of funds with itemized budget, agenda with objectives, needs assessment, and discussion topics

3 Review

- Review will be completed by the Medical/Scientific Department, in accordance with Health Care Compliance and Legal departments, if applicable
- Applicants may receive requests from Janssen Biotech, Inc., for additional information

4 Decision

- Both the requestor and authorized signer should regularly log into the system to access the grant request status
- If approved, an email will be sent to the authorized signer for further action. If denied, the requestor will receive an email notification regarding this decision

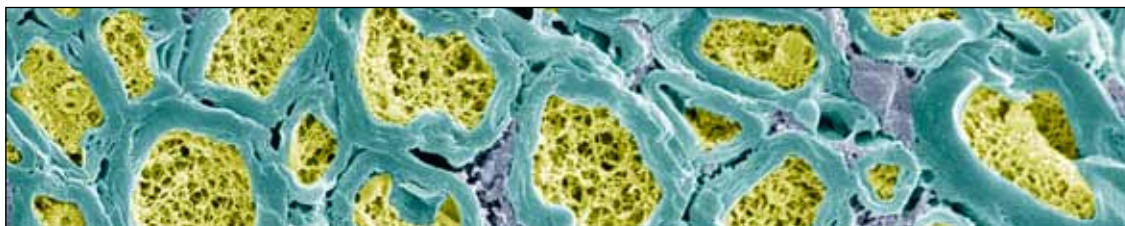
Visit janssenbiotech-grants.com for further information about educational grants.

CHARITABLE CONTRIBUTIONS

Charitable Contributions are provided for non-profit organizations with an IRS 501(c)(3) classification.

Our focus for giving includes therapeutic areas related to immunology and oncology, youth science education, environmental causes, and our corporate community.

Our corporate community is defined as: Berks, Bucks, Chester, Delaware, Lehigh, Montgomery, and Philadelphia Counties in Pennsylvania; Camden County in New Jersey; and New Castle County in Delaware.



Charitable Contributions Guidelines:

- Requesting organizations must be classified by the IRS as a 501(c)(3) non-profit
- Applications must be submitted online, sixty (60) days prior to event date or program start date
- Verbal commitments are not provided or acknowledged
- Organizations are limited to two approved contributions per calendar year; but should not take for granted a guaranteed two approvals each year
- Support preference will be given to program-based activities over episodic event-based requests
- Meal related events are not supported for therapeutic-based organizations
- Exceptions to our giving guidelines are at the discretion of the Charitable Contributions Committee
- Janssen Biotech, Inc., reserves the right to limit charitable contributions at any time

Application Process:

Our application process consists of an online eligibility quiz and application. There are two types of applications: (1) therapeutic related organizations (2) community organizations.

Charitable Giving Limitations:

Our charitable giving guidelines may prohibit or limit our support for some organizations or causes. Charitable contributions generally cannot be considered for:

- Unrestricted funds
- Direct support for individuals or physician groups
- Scholarships, loans, trips, tours
- Capital requests (e.g., building funds, endowments, multi-year commitments)
- Political, fraternal or athletic groups
- Sectarian and religious organizations that do not serve the general public on a non-denominational basis
- Donor advised funds

Visit janssenbiotech.com for additional information or you may call 1-800-746-6998.

We are responsible to the
communities in which we
live and work and to the
world community as well.



We must encourage civic
improvements and better
health and education.

– from the Johnson & Johnson Credo

Key Contacts:

Edmund Greenidge

Grants Charitable Contributions Director
egreenid@its.jnj.com

Debbie Carey

Oncology Grants Manager
dcarey@its.jnj.com

Steven Gallagher

Immunology Grants Manager
sgallag3@its.jnj.com

Chelsea Virden

Grants Analyst
cvirden1@its.jnj.com

Marcine Urbanek

Senior Analyst Community Affairs
murbane1@its.jnj.com

For more information about Grants & Charitable Contributions:
www.janssenbiotech-grants.com

Grants & Charitable Contributions Helpline: 1-800-746-6998

